

## **CAIRO, ILLINOIS PORT FAST FACTS**

**May 10, 2017**

Fast facts on the tugboat, towboat and barge industry.

**See below for additional facts, fact sheets and infographics that highlight the safety, environmental, and economic benefits of the nation's tugboat, towboat and barge industry.**

- *The tugboat, towboat and barge industry is the largest segment of the U.S. domestic maritime industry, employing more than 33,000 American mariners aboard its vessels.*
- *The nation's domestic maritime industry is an economic engine and a jobs creator which supports 500,000 jobs and provides \$100 billion in economic output.*
- *Moving goods on the water is the most efficient transportation mode. A typical inland barge has a capacity 15 times greater than one rail car and 60 times greater than one semi-trailer truck, and one 15 barge-tow can move the equivalent of 216 rail cars or 1,050 semi-trailer trucks.*
- *Water transportation plays a critical role in facilitating the nation's trade, moving 60 percent of U.S. grain for export.*
- *The single largest commodity that moves on U.S. waterways is petroleum – 244 million tons annually.*
- *Twenty percent of the nation's coal is moved on the water.*

*Source: American Waterways Operators*

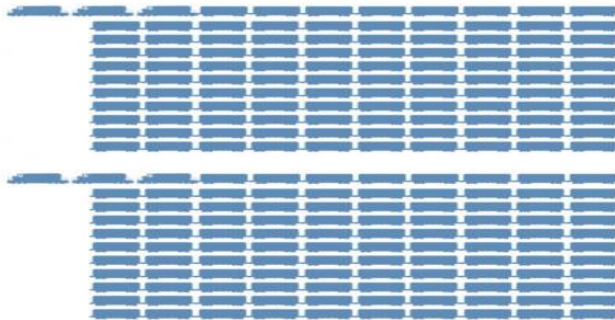
***Approximately 80% of all inland barge traffic in the United States passes by Cairo, Illinois every year***

ONE COMMON BARGE TOW  
CARRIES THE LOAD *of* HUNDREDS  
*of* RAIL CARS *or* TRUCKS

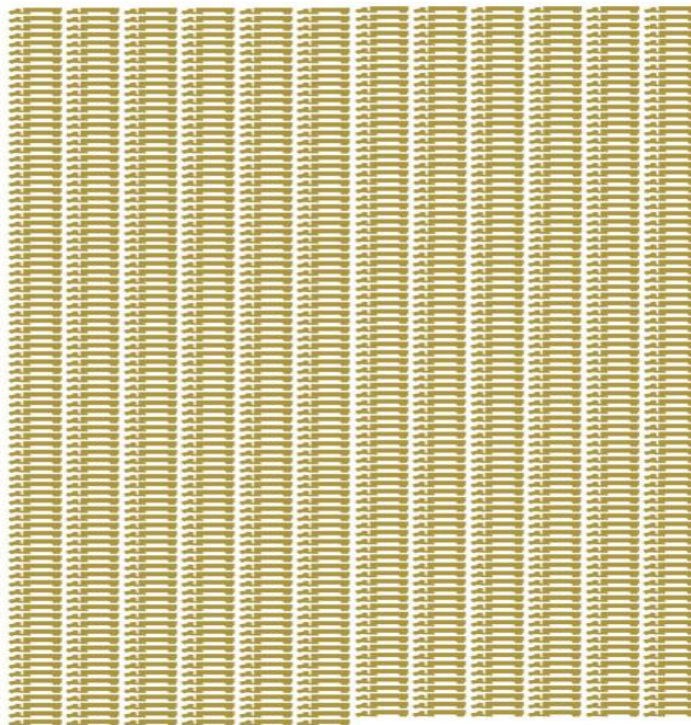
One 15-Barge Tow



216 Rail Cars + 6 Locomotives



1,050 Large Semi Tractor-Trailers



UNITS *to* CARRY 1,750  
SHORT TONS *of* DRY CARGO



1 Barge



16 Rail Cars



70 Trucks



One loaded  
covered hopper  
barge carries  
**58,333** bushels  
of wheat, enough  
to make almost  
**2.5 million**  
loaves of bread.

UNITS *to* CARRY 27,500  
BARRELS *of* LIQUID CARGO



1 Barge



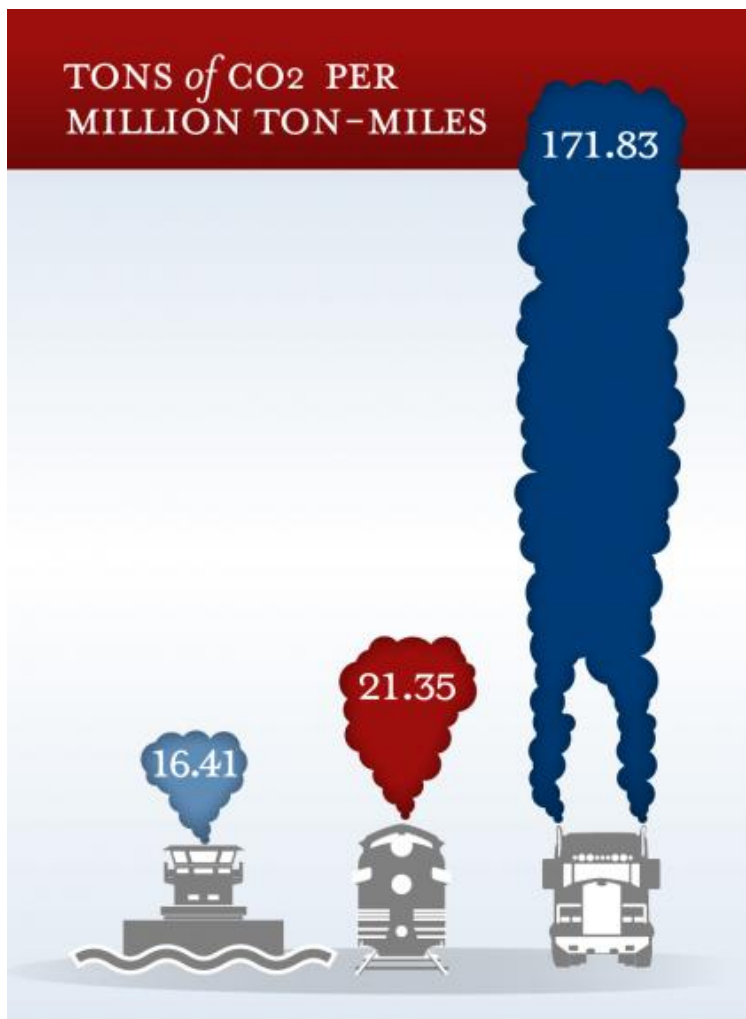
46 Rail Cars



144 Trucks



A loaded tank  
barge carries  
**27,500** barrels  
of gasoline,  
enough to keep  
about **2,500**  
automobiles  
running for an  
entire year.



Source for  
statistics: Texas  
Transportation  
Institute, *A Modal  
Comparison of Domestic  
Freight Transportation  
Effects on the General  
Public 2001-2009*,  
February, 2012